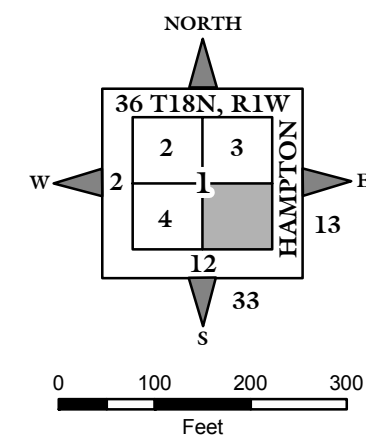
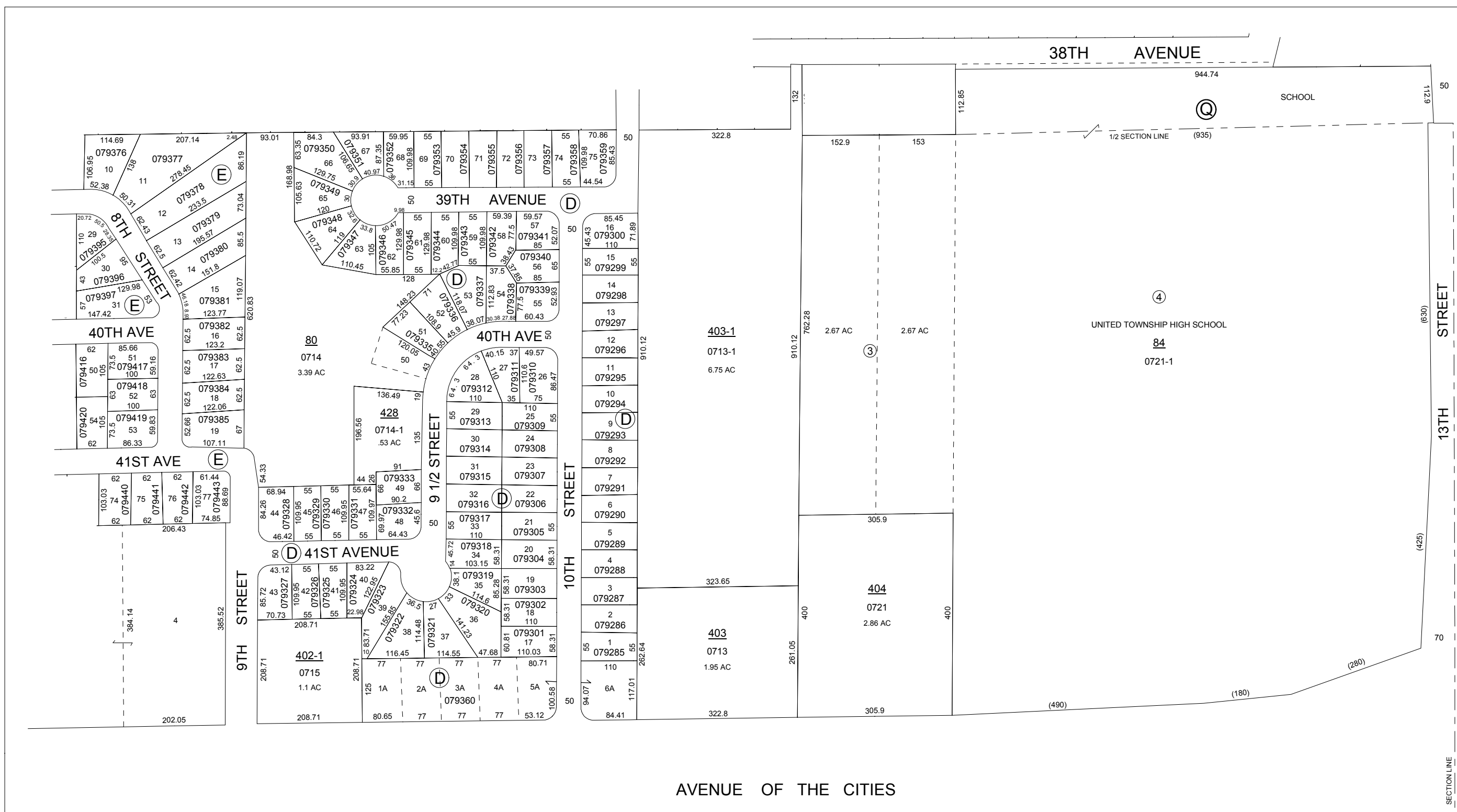


NOTE: STARTING IN 2002, PARCEL NUMBERS WILL NOT REFLECT THE TOWNSHIP ABBREVIATIONS, BUT THE 2-DIGIT TOWNSHIP NUMBER.

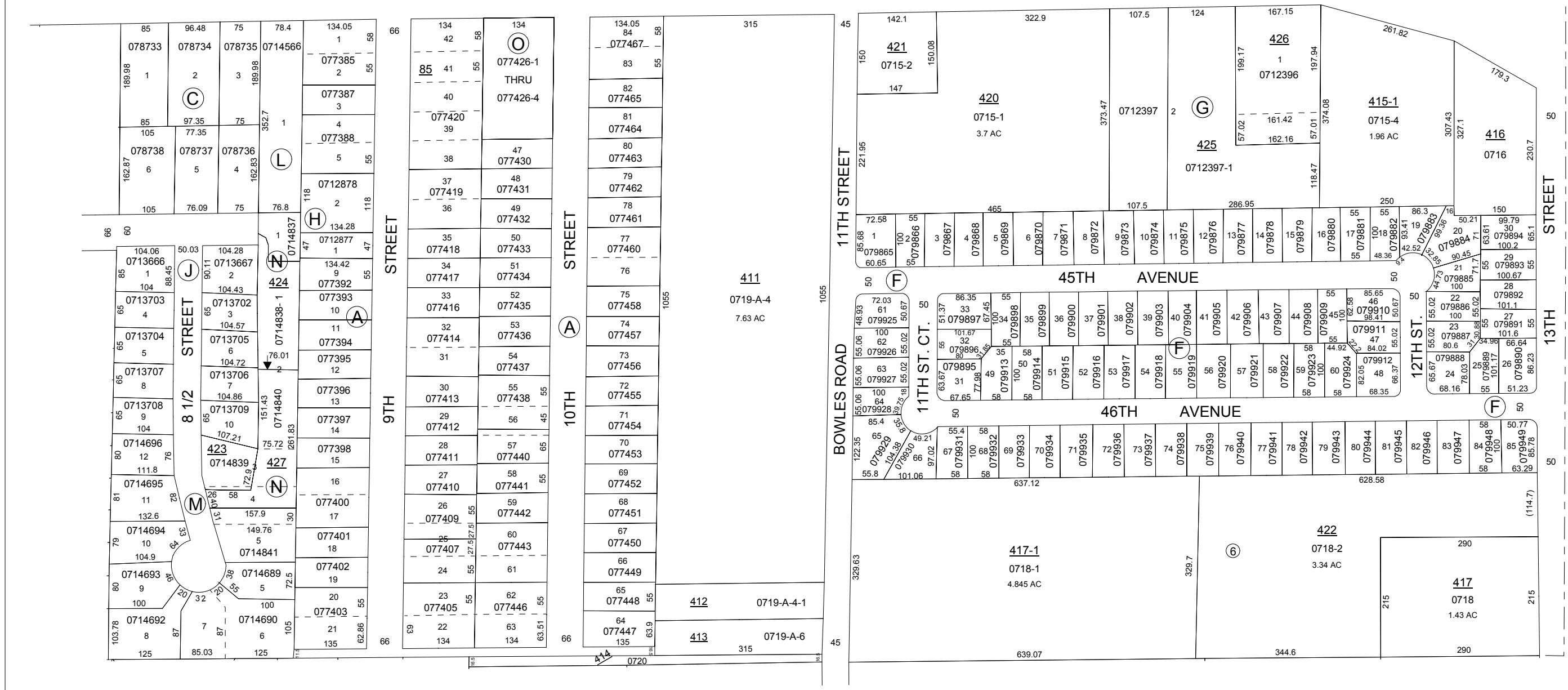


GIS DEPARTMENT
ROCK ISLAND COUNTY,
ILLINOIS

FOR SUBDIVISION
INFORMATION
SEE SHEET 5-S



AVENUE OF THE CITIES



SUPERVISORS' ASSESSMENT
MAP OF
S.E. 1/4 SECTION 1
T.17N., R.1W. OF 4TH P.M.
SOUTH MOLINE TOWNSHIP
SUPPLEMENTAL FOR 2014
17-01-400
THIS IS NOT A LEGAL DOCUMENT