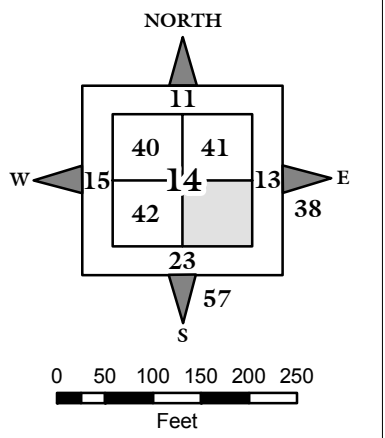


NOTE: STARTING IN 2002, PARCEL NUMBERS WILL NOT REFLECT THE TOWNSHIP ABBREVIATIONS, BUT THE 2-DIGIT TOWNSHIP NUMBER.



GIS DEPARTMENT
ROCK ISLAND COUNTY,
ILLINOIS

(A)

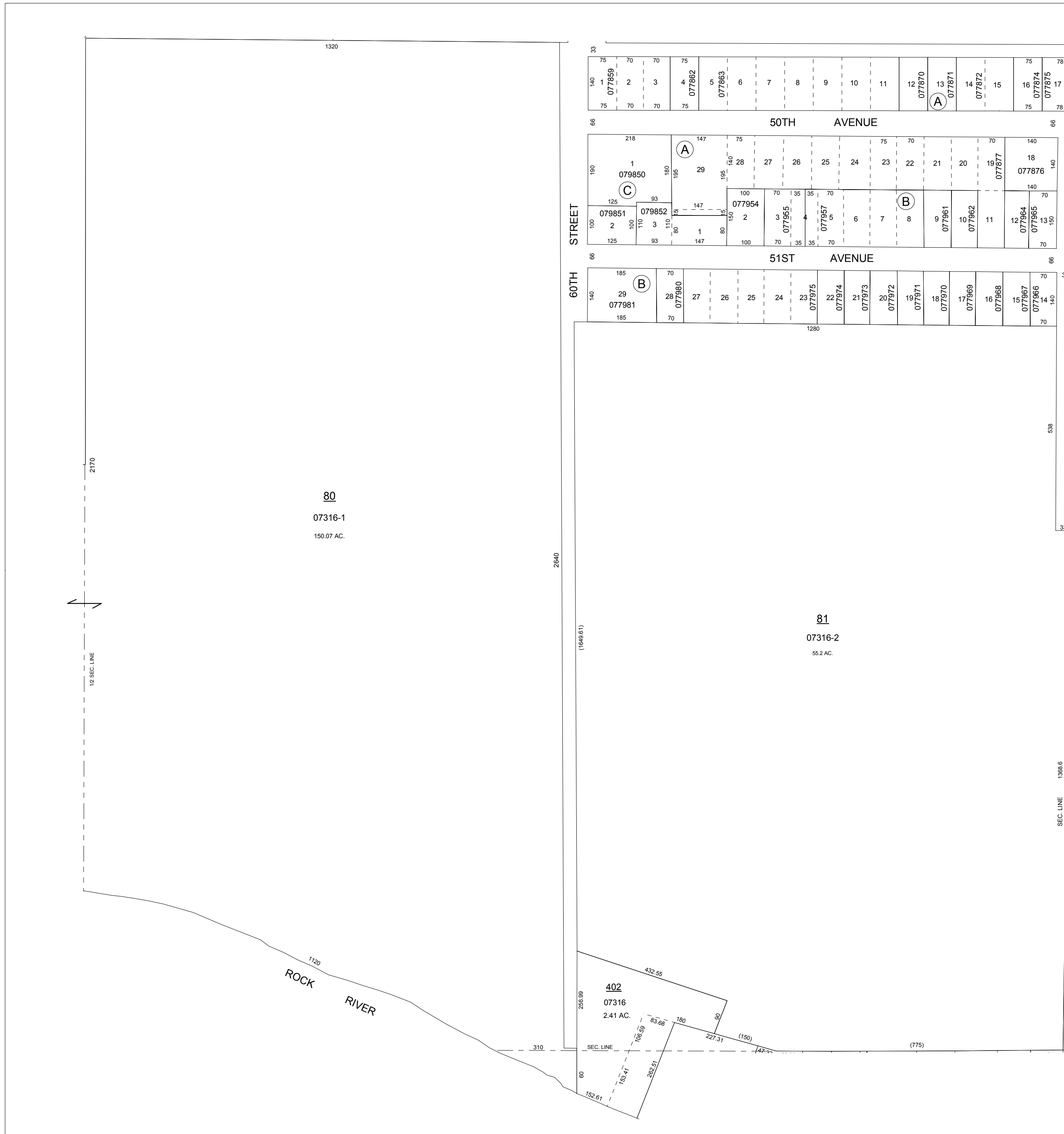
COVEMAKER'S SUBD. - FILED
APR. 18, 1953, IN PLAT BOOK
29, PAGE 179. 077859 - 7887

(B)

COVEMAKER'S 2ND SUBD. - FILED
AUG. 3, 1954, IN PLAT BOOK 29,
PAGE 179. 077953 - 7981

(C)

SUBD. LOT 30, COVEMAKER'S SUBD.
FILED OCT. 10, 1961, IN PLAT BOOK
36, PAGE 177. 079850 - 9852



SUPERVISORS' ASSESSMENT
MAP OF
S.E. 1/4 SEC. 14,
T. 17 N., R. 1 W., OF 4TH P.M.
SOUTH MOLINE TOWNSHIP
SUPPLEMENTAL FOR 2010
17-14-400
THIS IS NOT A LEGAL DOCUMENT