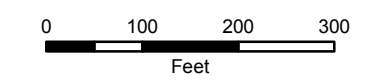
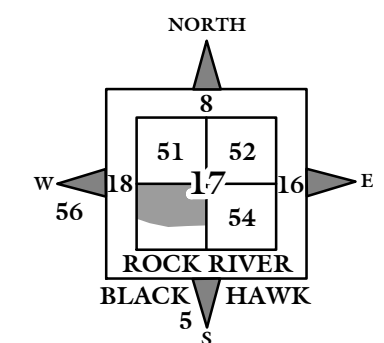


NOTE: STARTING IN 2002, PARCEL NUMBERS WILL NOT REFLECT THE TOWNSHIP ABBREVIATIONS, BUT THE 2-DIGIT TOWNSHIP NUMBER.

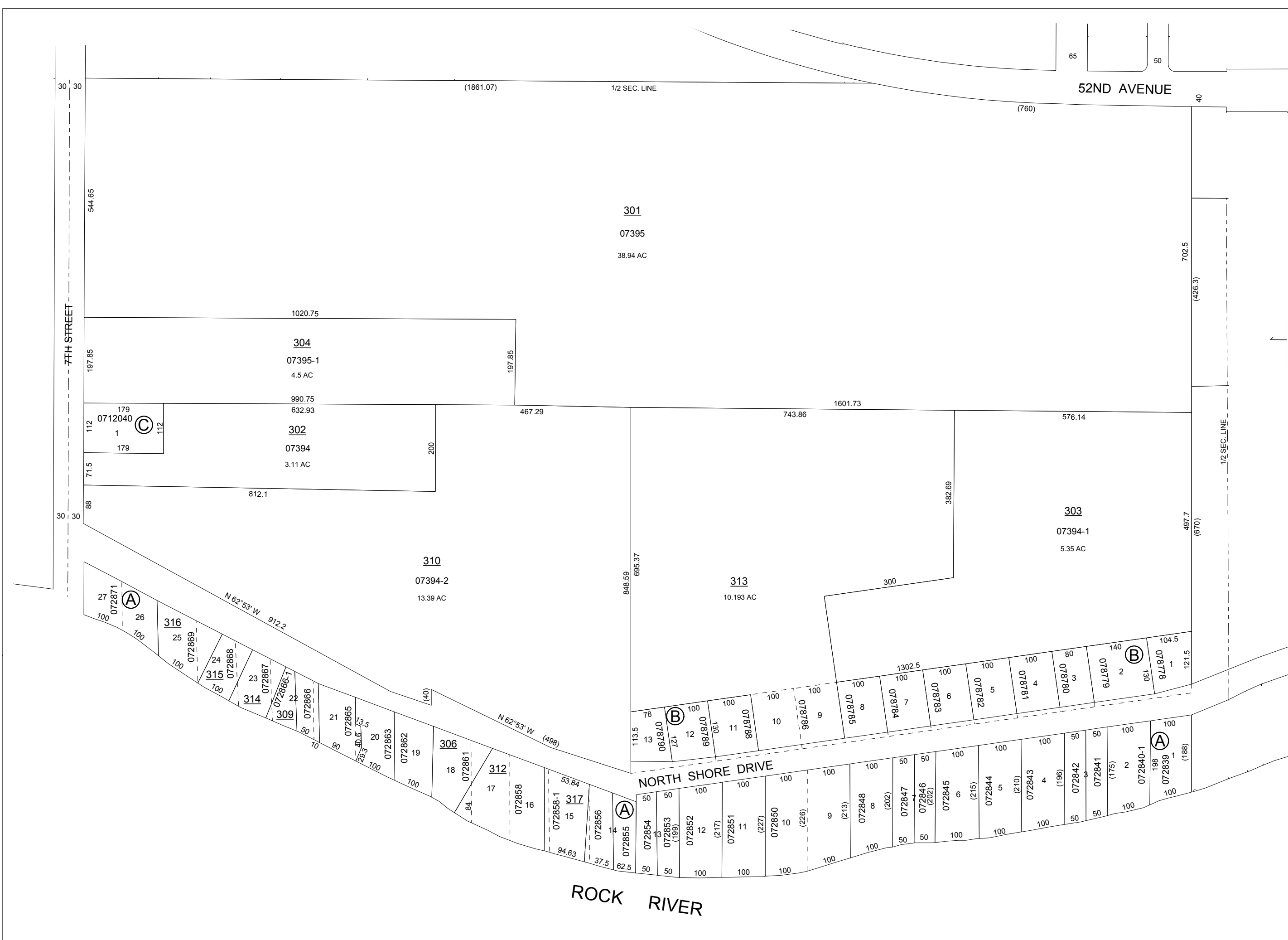


GIS DEPARTMENT  
ROCK ISLAND COUNTY,  
ILLINOIS

(A)  
WECKEL'S CAMPING GROUND  
FILED 7/18/1910, IN PLAT BOOK 11,  
PAGE 35. 072839 - 2872

(B)  
EGERT'S SUBD.  
FILED 4/9/1958, IN PLAT BOOK 33,  
PAGE 79. 078778 - 8790

(C)  
DAISY HAMILTON SUBD.  
FILED 5/22/1967, IN PLAT BOOK 41,  
PAGE 159. 0712040



SUPERVISORS' ASSESSMENT  
MAP OF  
SW FRL, 1/4 SECTION 17  
T. 17 N., R. 1 W., 4TH P.M.  
SOUTH MOLINE TOWNSHIP  
SUPPLEMENTAL FOR 2018  
17-17-300  
THIS IS NOT A LEGAL DOCUMENT