

SCALE 0 100 200 300 FT

MAP DEPT.
ROCK ISLAND COUNTY
ILLINOIS

REVISED TO:
MARCH 1, 1957
MARCH 1, 1959
JANUARY 1, 1962
JANUARY 1, 1965
JANUARY 1, 1967
JANUARY 1, 1969
JANUARY 1, 1974
JANUARY 1, 1980

(A) PARCEL VI, MOLETTE ADDITION TO MOLINE - FILED OCT. 17, 1947, IN BOOK 27 OF PLATS, PAGE 246 S.M. 9734 - ON O.L.R.

(B) DEARMONT'S 1ST ADD. BEING A SUBD. OF O.L.G., PARCEL VI, MOLETTE ADD TO MOLINE - FILED JULY 28, 1954, IN BOOK 29 OF PLATS, PAGE 316 S.M. 7882-7980

(C) PARCEL II, MOLETTE ADDITION TO MOLINE - FILED OCT. 17, 1947 IN BOOK 27 OF PLATS, PAGE 242.

(D) BAKER'S SUBD. OF PART OF O.L.P. PARCEL VI MOLETTE ADD TO MOLINE, FILED FEB. 24, 1956 IN PLAT BOOK 30, PAGE 133. S.M. 8000-1 - 8000-17

(E) SUBD. OF O.L.F. PARCEL II, MOLETTE ADD. TO MOLINE, FILED FEB. 23, 1956 IN PLAT BOOK 30, PAGE 117. S.M. 6747-1 - 6747-3

(F) SUBD. OF O.L.E. PARCEL II, MOLETTE ADD TO MOLINE, FILED FEB. 23, 1956 IN PLAT BOOK 30, PAGE 113. S.M. 6746-1 - 6746-6

(G) SUBD. OF O.L.D. PARCEL II, MOLETTE ADD TO MOLINE, FILED FEB. 23, 1956 IN PLAT BOOK 30, PAGE 129. S.M. 6745-1 -

(H) SUBD. OF O.L.C. PARCEL II, MOLETTE ADD TO MOLINE, FILED FEB. 23, 1956 IN PLAT BOOK 30, PAGE 121. S.M. 6744-1 - 6744-15

(I) SUBD. OF O.L.H. PARCEL II, MOLETTE ADD TO MOLINE, FILED FEB. 23, 1956 IN PLAT BOOK 30, PAGE 125. S.M. 6743-1 - 6743-15

(J) SHEVICK'S SUBD. FILED OCT. 10, 1958 IN PLAT BOOK 33, PAGE 197. S.M. 9003 - 9006

(K) CHERRY RIDGE - FILED JAN. 4, 1964 IN PLAT BOOK 40, PAGE 125. S.M. 11705 - 11708

(L) CHERRY RIDGE 2ND ADD. FILED MAR. 14, 1968 IN PLAT BOOK 41, PAGE 335 S.M. 12184 - 12202

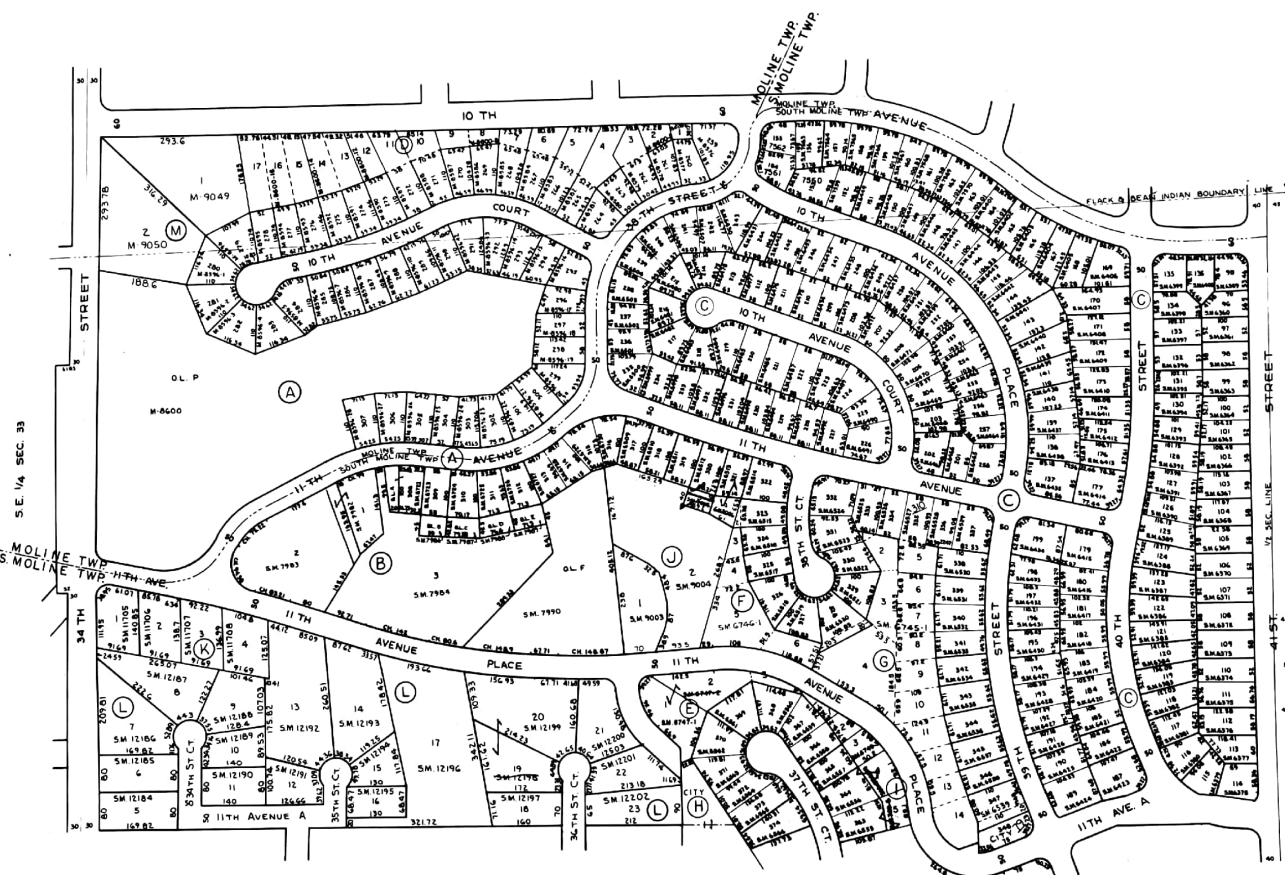
SUPERVISORS' ASSESSMENT
MAP OF

PART OF THE S.W. 1/4 OF SEC. 34-18-1W OF THE 4TH P.M.

SOUTH MOLINE TOWNSHIP
SHEET 58

MOLINE TOWNSHIP
SHEET 26

SUPPLEMENTAL FOR 1980



(M) BONNE FOX SUBD. FILED JULY 20, 1973 IN PLAT BOOK 43, PAGE 372. M-9049 - 9050