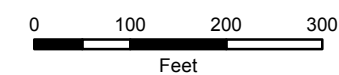
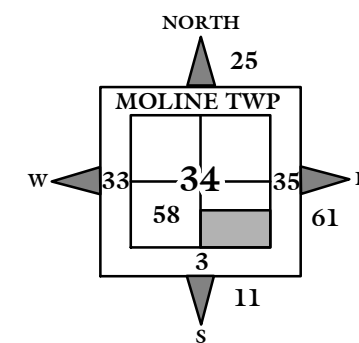
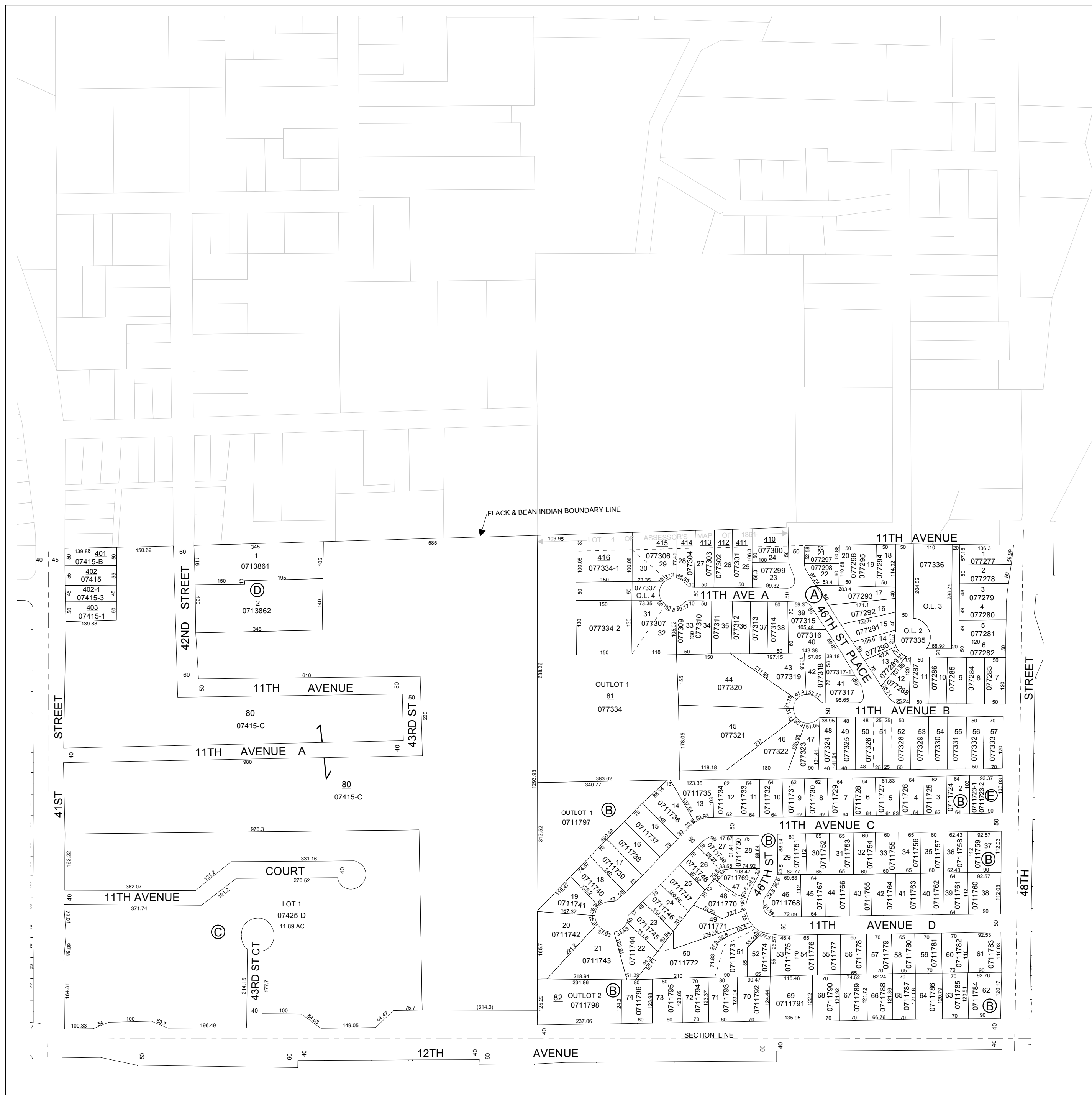


NOTE: STARTING IN 2002, PARCEL NUMBERS WILL NOT REFLECT THE TOWNSHIP ABBREVIATIONS, BUT THE 2-DIGIT TOWNSHIP NUMBER.



GIS DEPARTMENT
ROCK ISLAND COUNTY,
ILLINOIS

- (A) OAKRIDGE ADD. TO MOLINE FILED JULY 19, 1951, IN BOOK 29 OF PLATS, PAGE 7. 077277 - 7337
- (B) DON BEALER'S 4TH ADD. - FILED MAR. 11, 1966, IN PLAT BOOK 40, PAGE 187. 0711723 - 11798
- (C) SPRING VALLEY - FILED AUG. 16, 1971, IN PLAT BOOK 43, PAGE 269.
- (D) MUDD'S SUBD. - FILED APR. 29, 1986, IN PLAT BOOK 46, PAGE 166. 0713861 - 13862
- (E) BOWSER 1ST CONDOS - FILED SEPT. 24, 2004, DOC. # 2004-28055, UNITS 1 & 2. 0711723-1 & 11723-2



SUPERVISORS' ASSESSMENT
MAP OF
S.E. 1/4 SEC. 34-18-1W OF 4TH
P.M. S. OF FLACK & BEAN
INDIAN BOUNDARY LINE
SOUTH MOLINE TOWNSHIP
SUPPLEMENTAL FOR 2017
08-34-
THIS IS NOT A LEGAL DOCUMENT