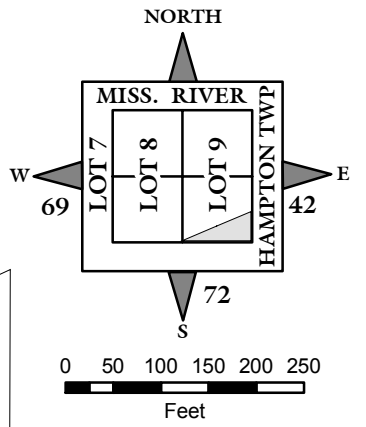


NOTE: STARTING IN 2002, PARCEL NUMBERS WILL NOT REFLECT THE TOWNSHIP ABBREVIATIONS, BUT THE 2-DIGIT TOWNSHIP NUMBER.



GIS DEPARTMENT
ROCK ISLAND COUNTY,
ILLINOIS

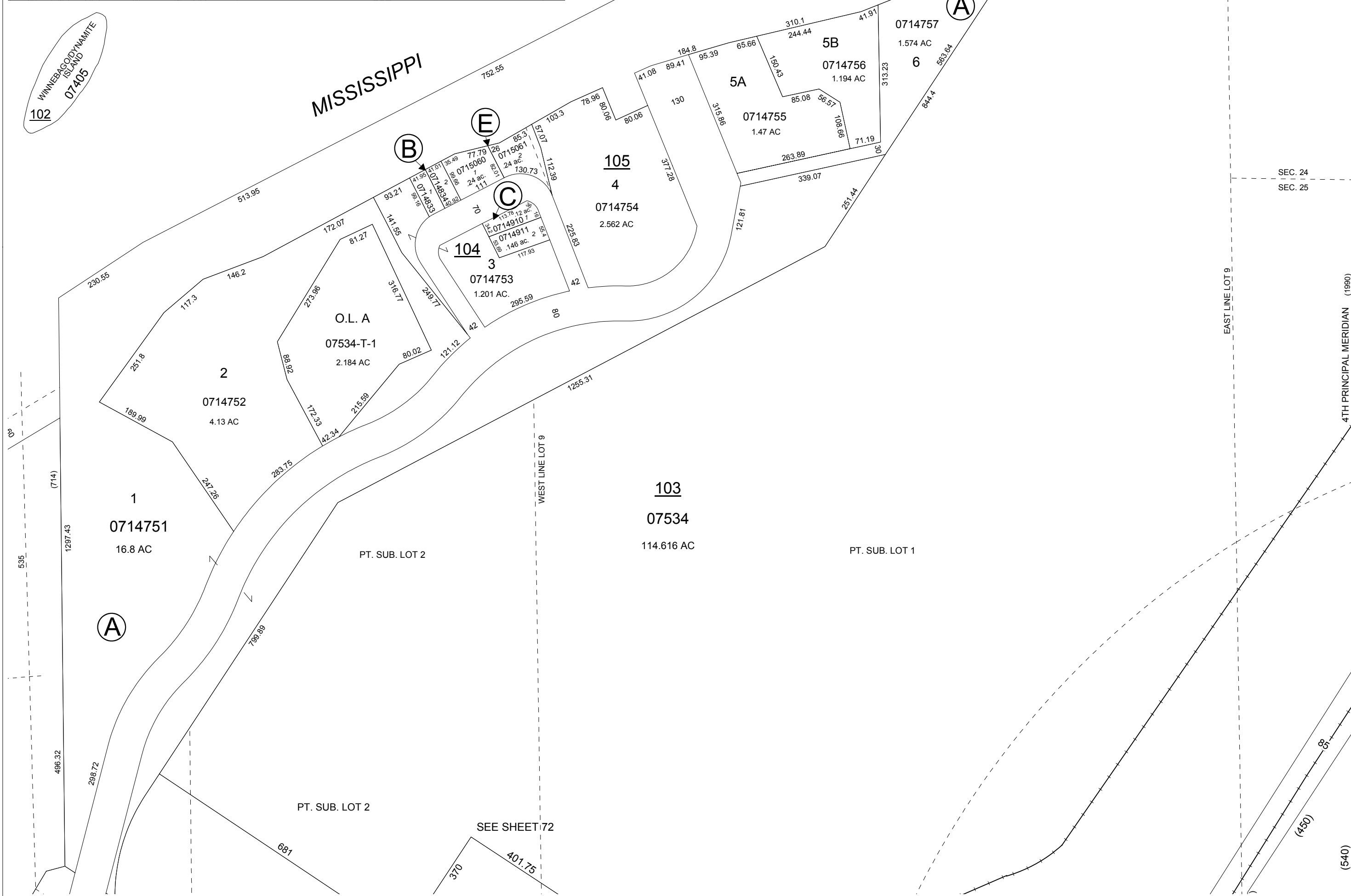
(A)
QUARTER ADD. -- FILED AUG. 24,
2001. DOC. # 2001-23980.
0714751--14757

(B)
BEACON HARBOR FIRST ADD.
FILED NOV. 27, 2002, DOC. #
2002-38297. 0714833 - 14834

(C)
BEACON HARBOR SECOND ADD.
FILED MAR. 23, 2004, DOC. #
2004-08125. 0714910 - 14911

(D)
PALMER & ALBRECHT'S 1ST ADD.
TO EAST MOLINE - FILED MAY 16,
1914, IN PLAT BOOK 12, PAGE 68.
073381 - 3408

(E)
BEACON HARBOR THIRD ADD.
FILED OCT. 4, 2010, DOC. #2010-
23564. 0715060 - 15061



SUPERVISORS' ASSESSMENT
MAP OF
PART OF LOTS 8 & 9, LECLAIRE'S
RESERVE, T. 18 N., R. 1 W. OF 4TH
P.M. ALSO PART OF FRAC. SECS.
24 & 25, T. 18N., R. 1W. OF 4TH P.M.
SOUTH MOLINE TOWNSHIP
SUPPLEMENTAL FOR 2011
THIS IS NOT A LEGAL DOCUMENT